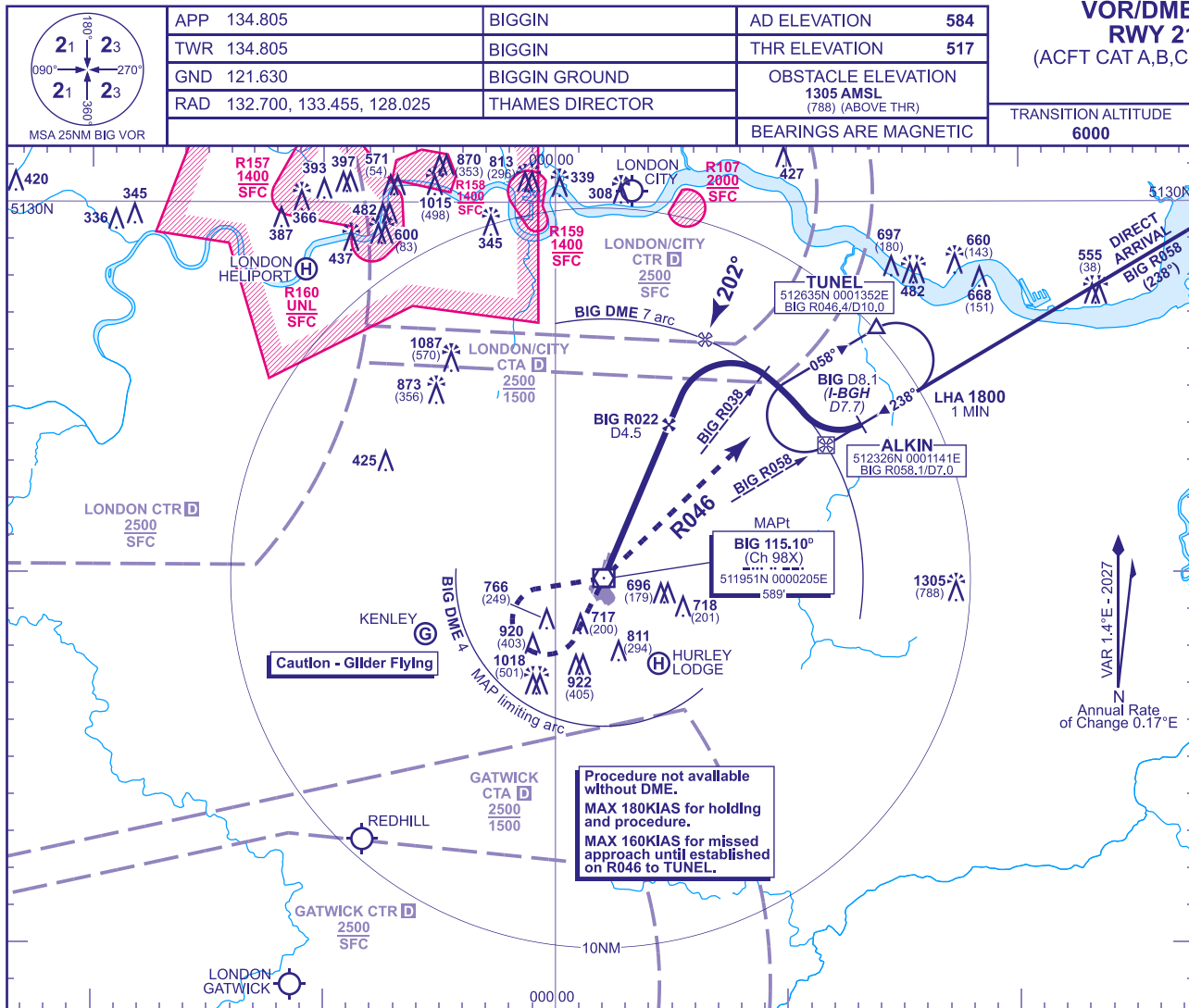


INSTRUMENT APPROACH CHART - ICAO

BIGGIN HILL
VOR/DME
RWY 21
(ACFT CAT A,B,C)

NOTE

- 1 Initial arc track at BIG R058 is 328°M, Final arc track at BIG R038 is 308°M. Rate of change of arc track 8.2°/NM.
- 2 Procedural arrivals not normally permitted when 'Thames Director' is available.
- 3 Aircraft will normally be radar vectored by 'Thames Director' direct to final approach at **1800**, to be established not later than I-BGH DME 5.
- 4 Aircraft which need to lose significant altitude shuttle in ALKIN hold as directed by ATC.
- 5 FAT offset 3° from RWY CL (205°M).
- 5 ATC will normally require aircraft to hold **not below 2000**. MAX 180KIAS for holding.

CHANGE (4/26): MAG INFO REVISED. FREQUENCIES REVISED.

AERO INFO DATE 09 FEB 26

AD 2-EGKB-8-3